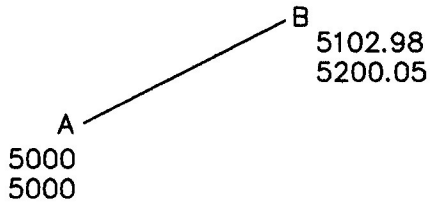
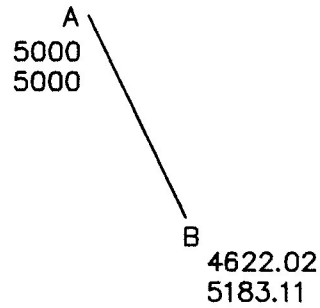


For problems 10 thru 13, solve the bearing and distance from point A to point B

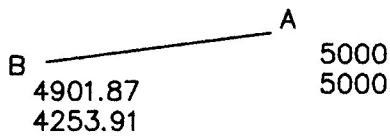
10.



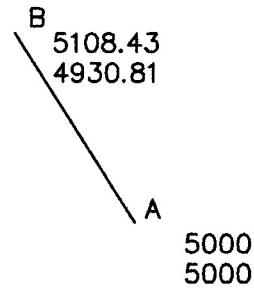
11.



12.

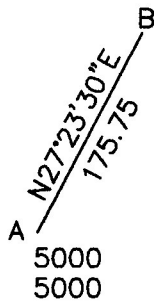


13.

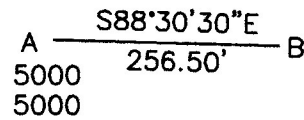


For problems 14 thru 17, solve the coordinates for point B

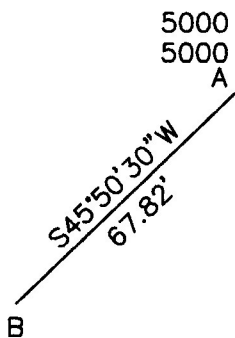
14.



15.



16.

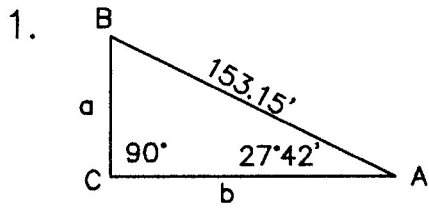


17.

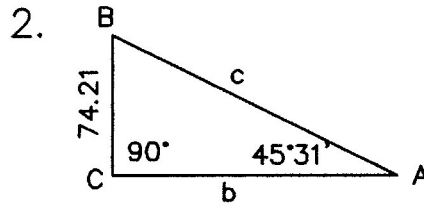


SHOW YOUR WORK ON ALL PROBLEMS.

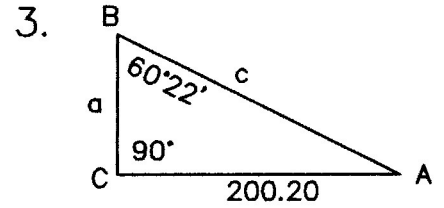
For problems 1 thru 9, solve all angles and distances



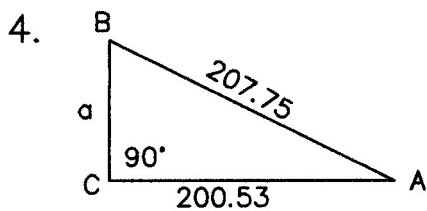
$a=71.19'$
 $b=135.60'$
 $B=62^{\circ}18'$



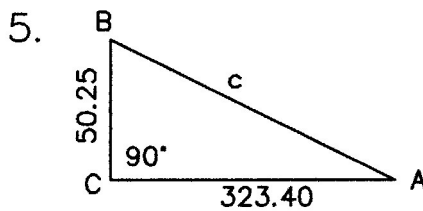
$c=104.02'$
 $b=72.88'$
 $B=44^{\circ}29'$



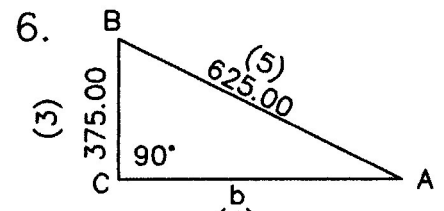
$c=230.32'$
 $a=113.88'$
 $A=29^{\circ}38'$



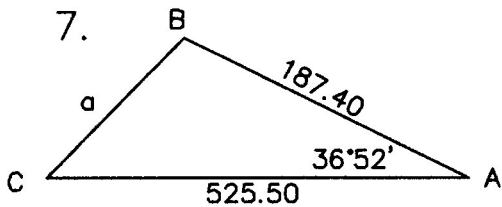
$a=54.29'$
 $A=15^{\circ}08'59''$
 $B=74^{\circ}51'01''$



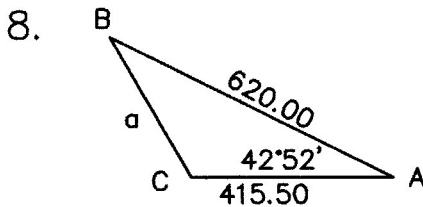
$c=327.28'$
 $A=08^{\circ}49'55''$
 $B=81^{\circ}10'05''$



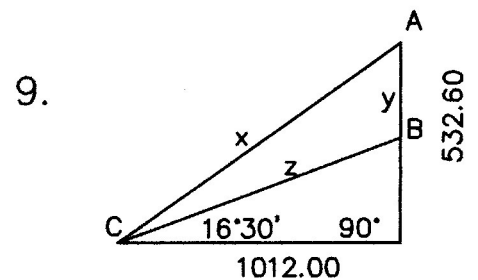
$b=500.00'$
 $A=36^{\circ}52'12''$
 $B=53^{\circ}07'48''$



$a=392.04'$
 $B=126^{\circ}28'04''$
 $C=16^{\circ}39'56''$



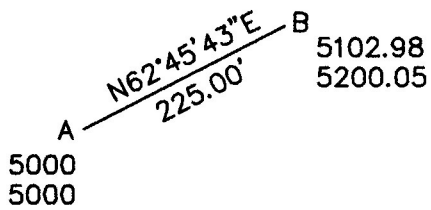
$a=423.57'$
 $B=41^{\circ}51'40''$
 $C=95^{\circ}16'20''$



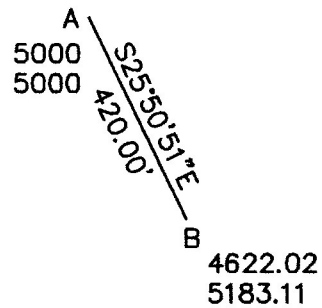
$A=62^{\circ}14'34''$
 $B=73^{\circ}30'$
 $C=27^{\circ}45'26''$
 $x=1143.59'$
 $y=232.83'$
 $z=1055.46'$

For problems 10 thru 13, solve the bearing and distance from point A to point B

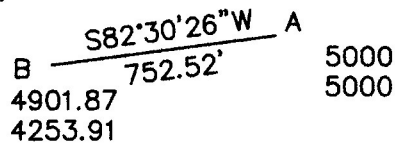
10.



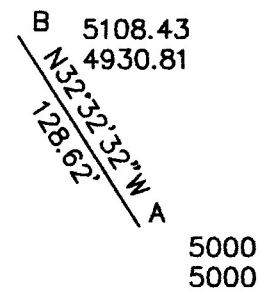
11.



12.

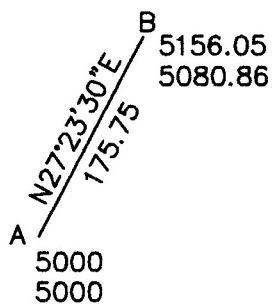


13.

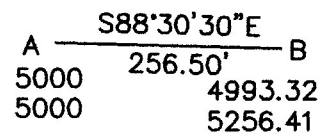


For problems 14 thru 17, solve the coordinates for point B

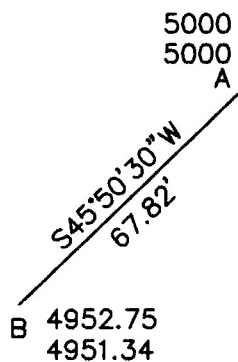
14.



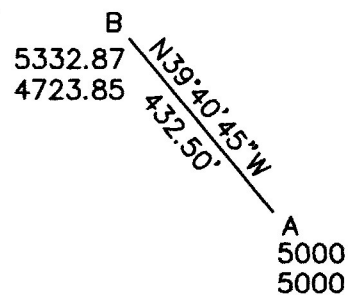
15.



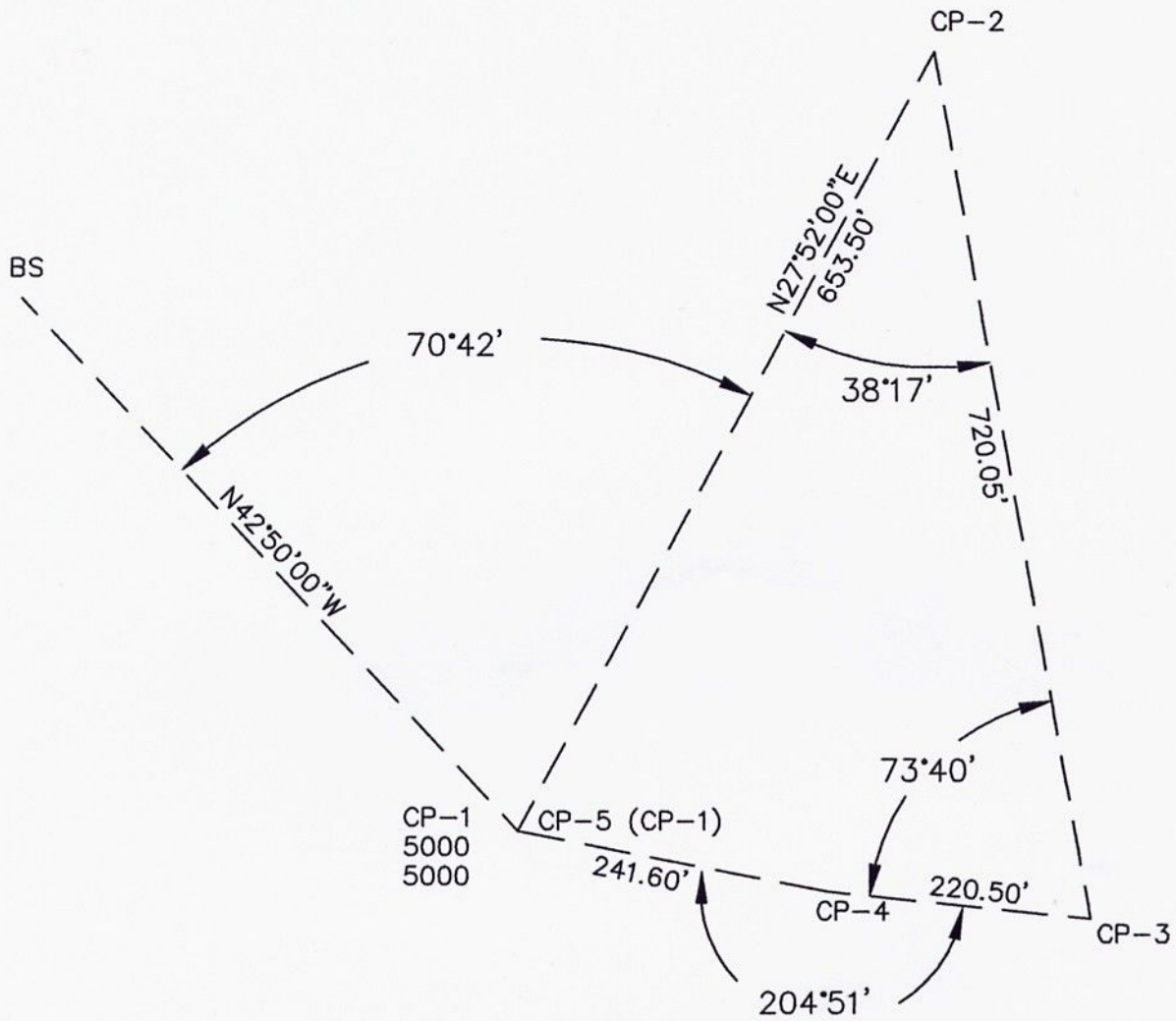
16.



17.



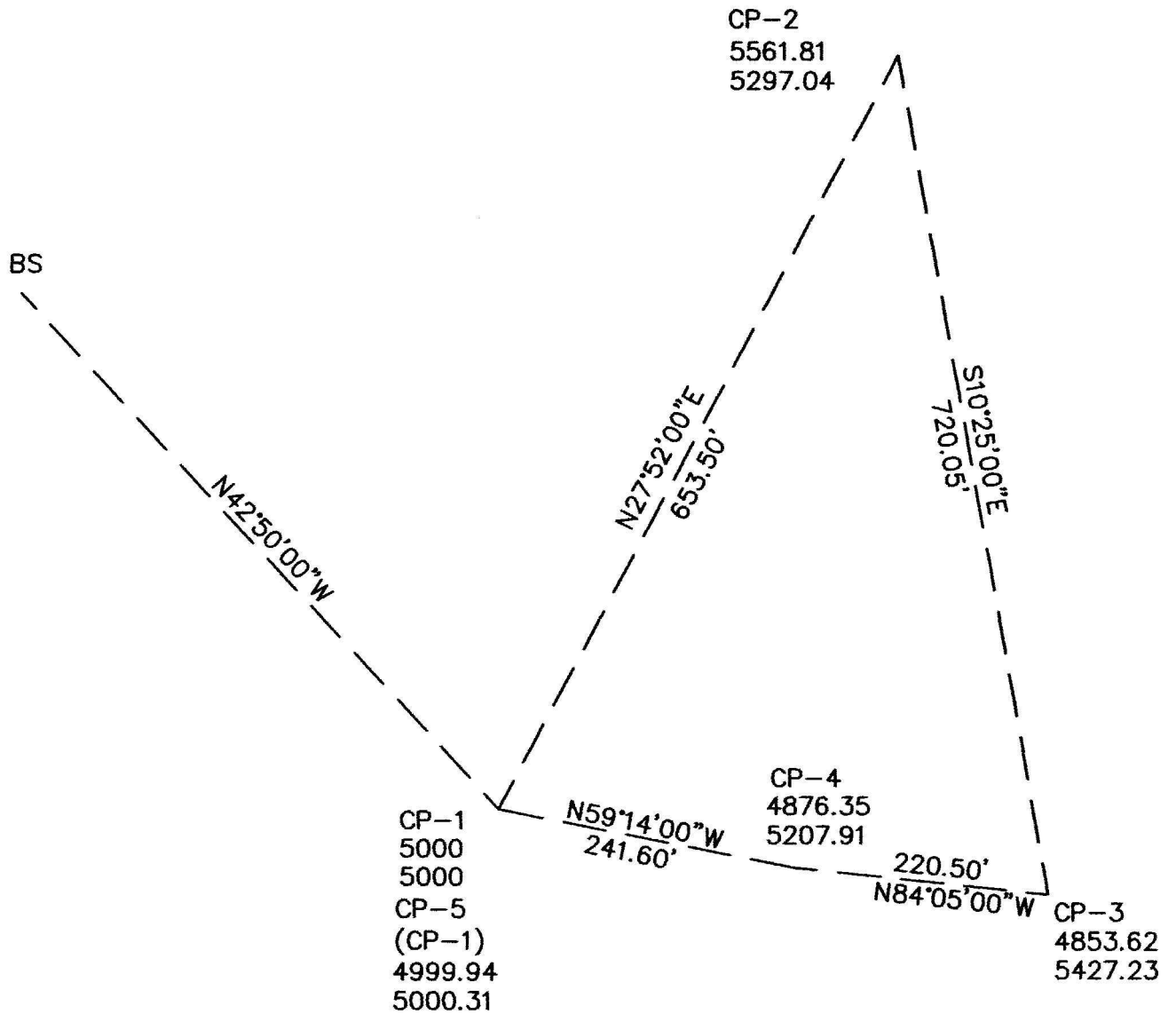
Calculate the coordinates for all angle points in the traverse.



Calculate the Raw Closure.

Identify the traverse leg most likely to have the most error.

Calculate the coordinates for all angle points in the traverse.

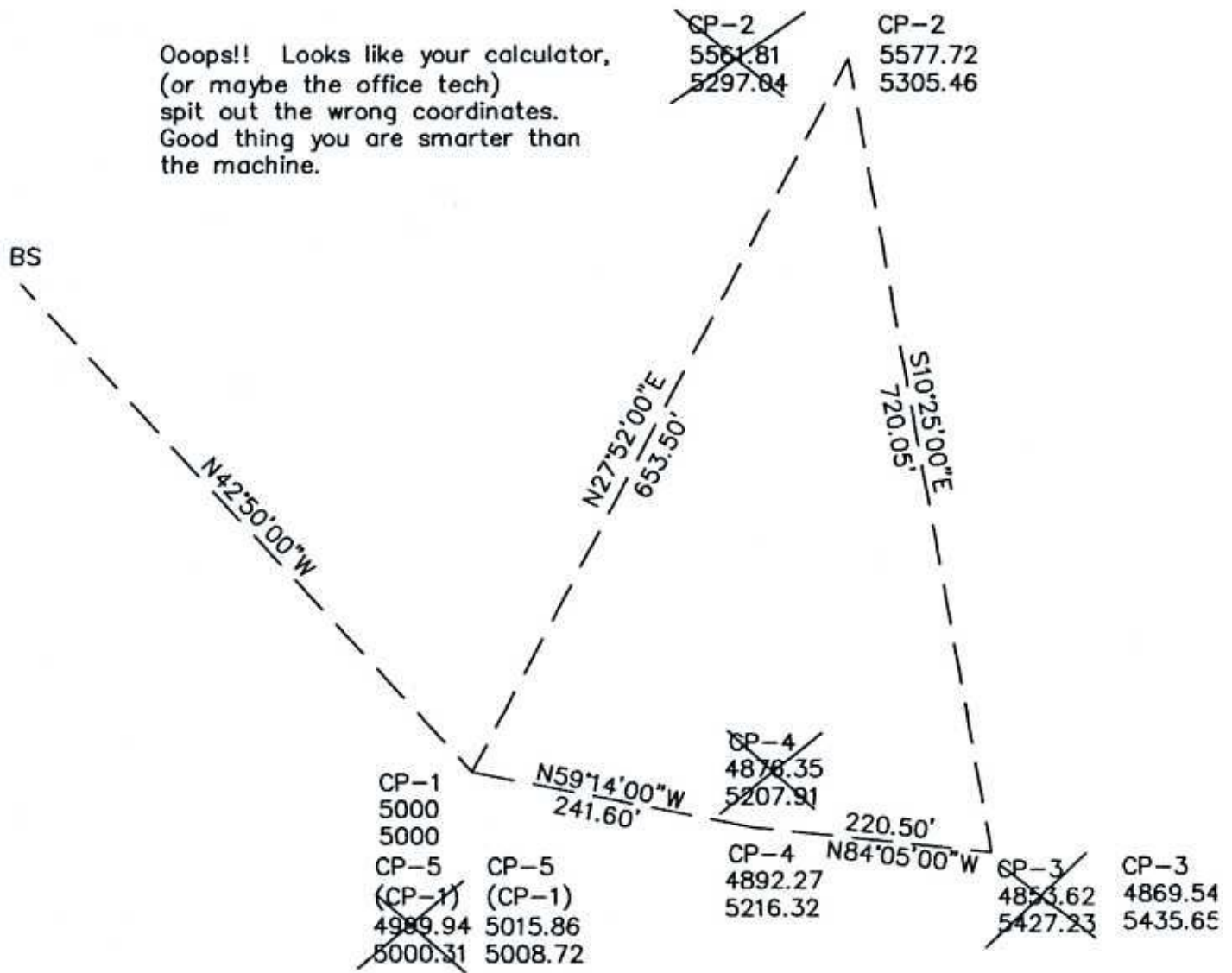


Calculate the Raw Closure. CLOSING B/D= $S28^{\circ}49'10''W$ 18.10'
 CLOSING RATIO=1:99.98 or 1:100

Identify the traverse leg most likely to have the most error.
 CP-1 TO CP-2

Calculate the coordinates for all angle points in the traverse.

Oops!! Looks like your calculator,
(or maybe the office tech)
spit out the wrong coordinates.
Good thing you are smarter than
the machine.



Calculate the Raw Closure. CLOSING B/D=S28°49'10\"W 18.10'
CLOSING RATIO=1:99.98 or 1:100

Identify the traverse leg most likely to have the most error.
CP-1 TO CP-2